

A woman with long brown hair and light makeup is the central focus. She is wearing a white, off-the-shoulder lace dress with a scalloped edge and a row of white pom-poms along the bust. The dress has intricate lace patterns. She is leaning against a rustic, reddish-brown wall made of mud or brick. Her right hand is resting on the wall near her shoulder. The lighting is soft and natural, highlighting the texture of the lace and the woman's features.

BOM

From Marrakech



BM 24-01D

IVORY

Chiffon, Lace

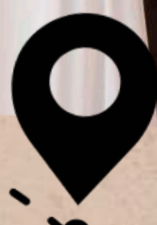
SLEEVES BM 24-01 SL

IVORY

Lace



Marrakech





BM 24-01D + SL



out to
altho
al w
n Rat
e of ye
someth
blackth
ay.
atch tic
night
ating,
or all i
g-plac
f big-c
me ye
nich I
berwe
tensic
n par
mer
y w
ng c
ond
and

BM 24-02

IVORY/NUDE

ALL IVORY

Chiffon, Lace





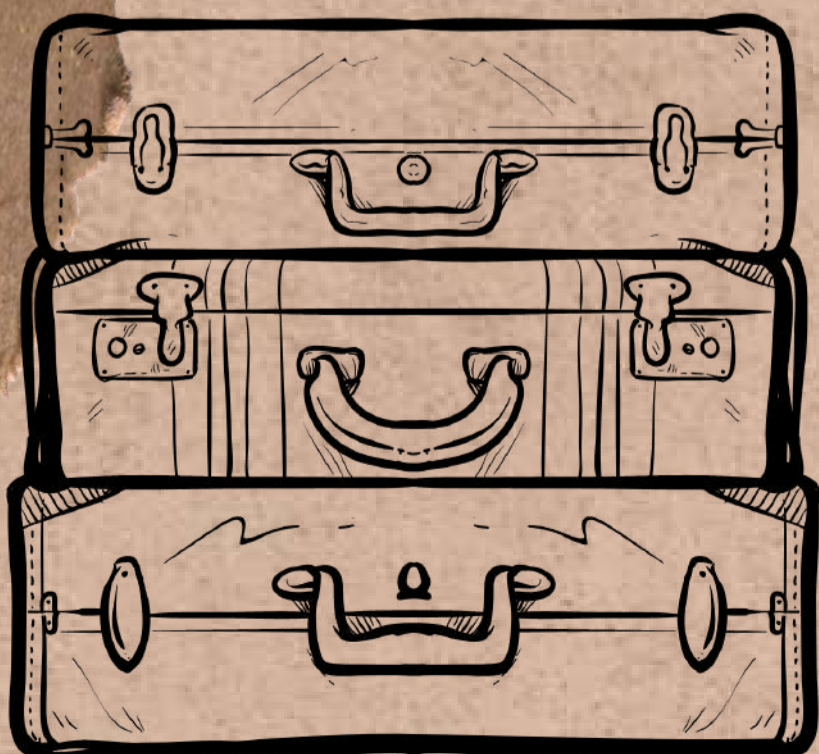
BM 24-02



BM 24-03

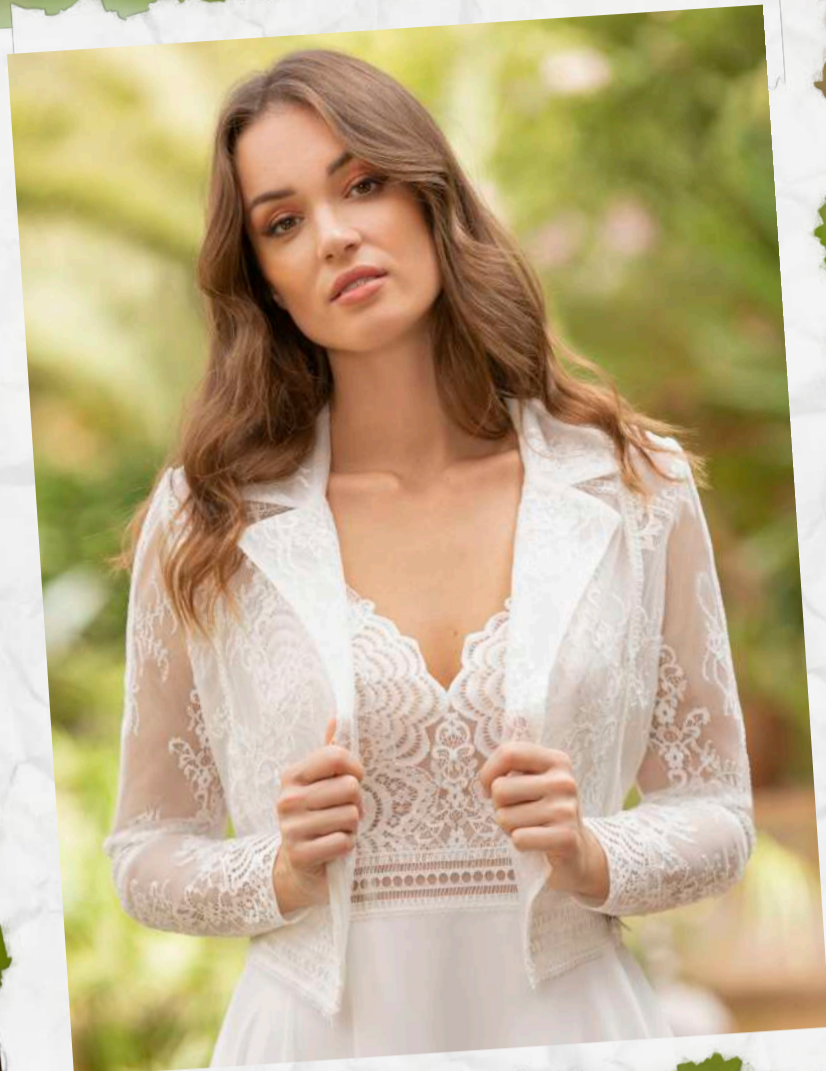
IVORY/NUDE

ALL IVORY
Chiffon, Lace



BM 24-03





JACKET
BM 24-04 J

IVORY
Lace

BM 24-04 D

IVORY/NUDE
ALL IVORY
Chiffon, Lace



BM 24-04



BM 24-05

IVORY

Chiffon, Lace



to
nc
w
Rat
f yea
methi
ckth
ch tic
night
ating,
or all it
g-place
f big-c
me yea
nich l
berwe
tensic
n par
mer
v
ng c
ond
and
e

BOHEME



BM 24-05



A woman with dark hair is shown from the back, wearing a long, flowing, light-colored gown with a lace bodice and a full skirt. She is standing in a garden with a pond in the background. The pond has lily pads and flowers. There are several large pots with red flowers on a shelf behind her. The scene is brightly lit, suggesting a sunny day.

BM 24-06

IVORY/NUDE

ALL IVORY

Chiffon, Lace, Sequins

BM 24-06





out to
altho
al w
Rat
of ye
methi
ckth
ch tic
ight
ating,
or all it
place
big-c
e ye
ch li
erwe
ensio
n par
ner
v
c
d
and
e



BM 23-07

IVORY

Tulle, Lace



BM 24-07



BM 24-08

IVORY

Chiffon, lace

BM 24-08





BM 24-09

IVORY

Chiffon, Lace





BM 24-10

**IVORY/ NUDE
ALL IVORY**

Crêpe, Lace





BM 24-10

BM 24-11

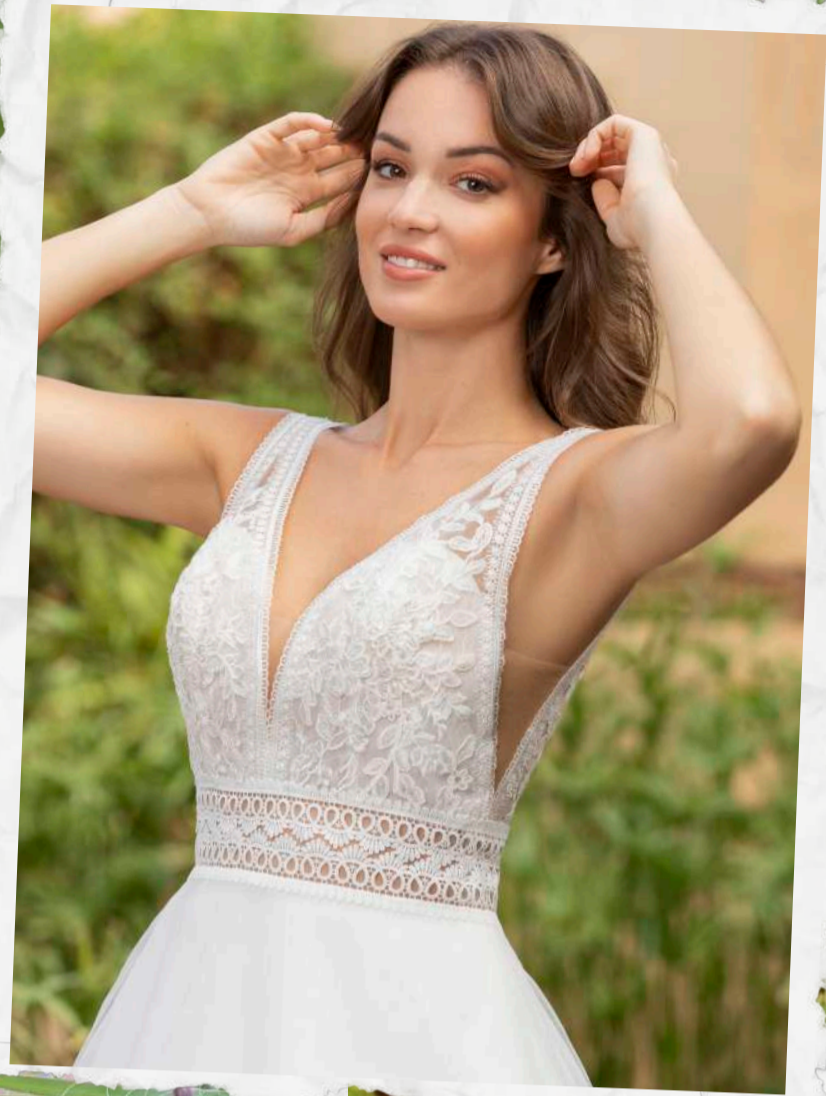
IVORY

Chiffon, Lace





BM 24-11



BM 24-12

IVORY/ NUDE

ALL IVORY

Tulle, Lace, Sequins



BM 24-12



BM 24-13

IVORY

Chiffon, Lace







BM 23-14

IVORY

Chiffon, Lace





BM 24-15

IVORY

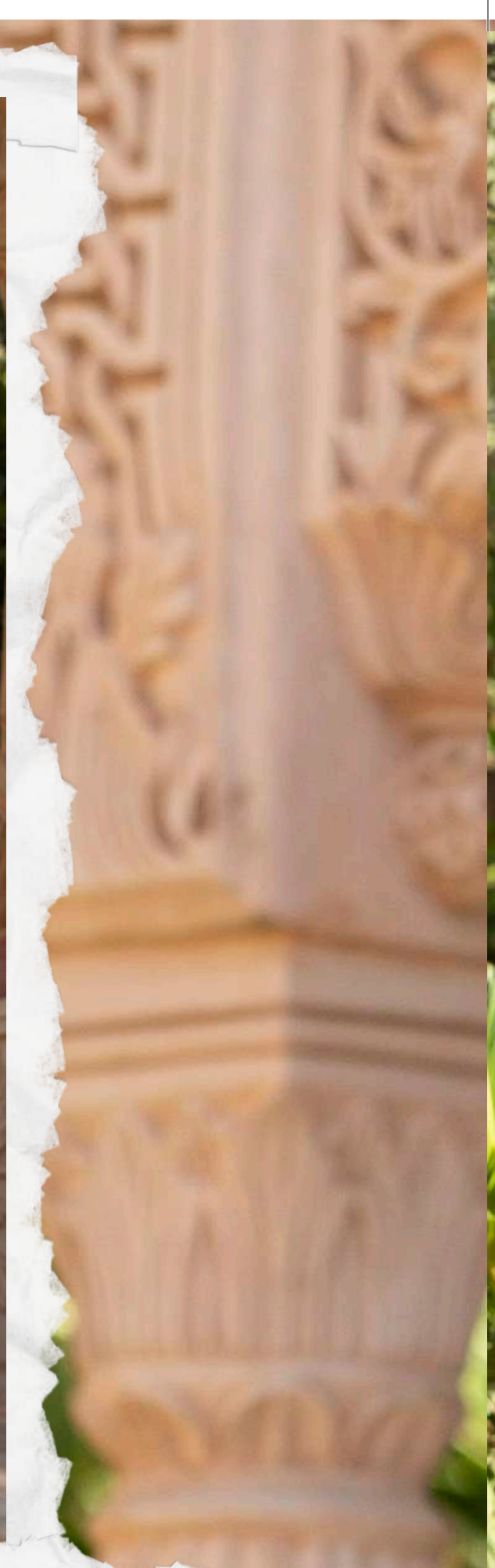
ALL WHITE

Chiffon, Lace, Sequins





BM 24-15



BM 24-16

IVORY/ NUDE

ALL IVORY

Tulle, Lace





BM 24-17

IVORY

Chiffon, Lace



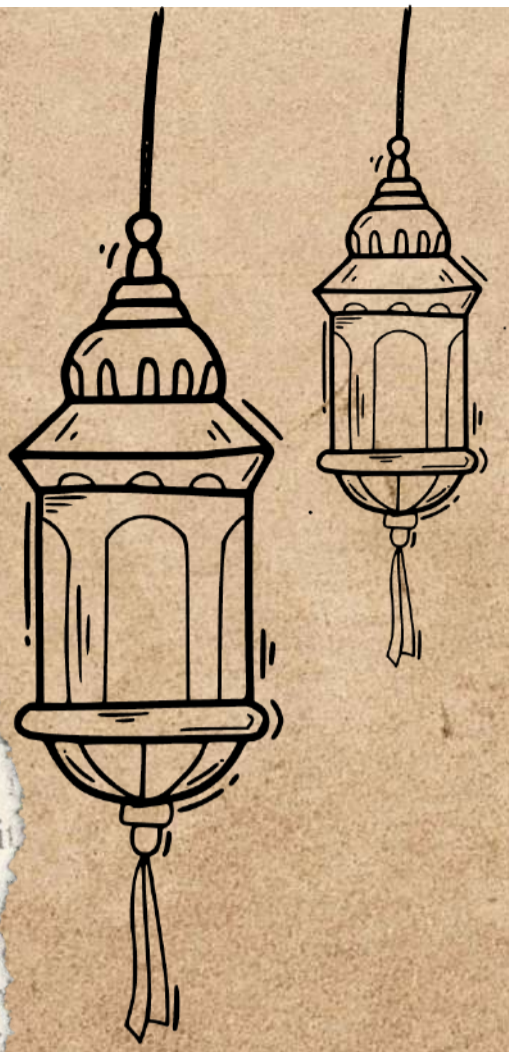
ut to
ltho
al w
Rat
of ya
methi
ackth
y.
atch tic
night
ating,
or all i
g-plac
f big-c
me ya
nich l
berwe
tensio
n par
mer
y v
ng c
ond
and
e







at to
lth
l w
Rat
of ye
meth
ckth
y.
tch ti
night
ating,
or all i
g-plac
f big-c
me ye
hich li
berwe
tensio
n par
mer
y w
ng c
ond
and
e



BOHEME

BM 24-18

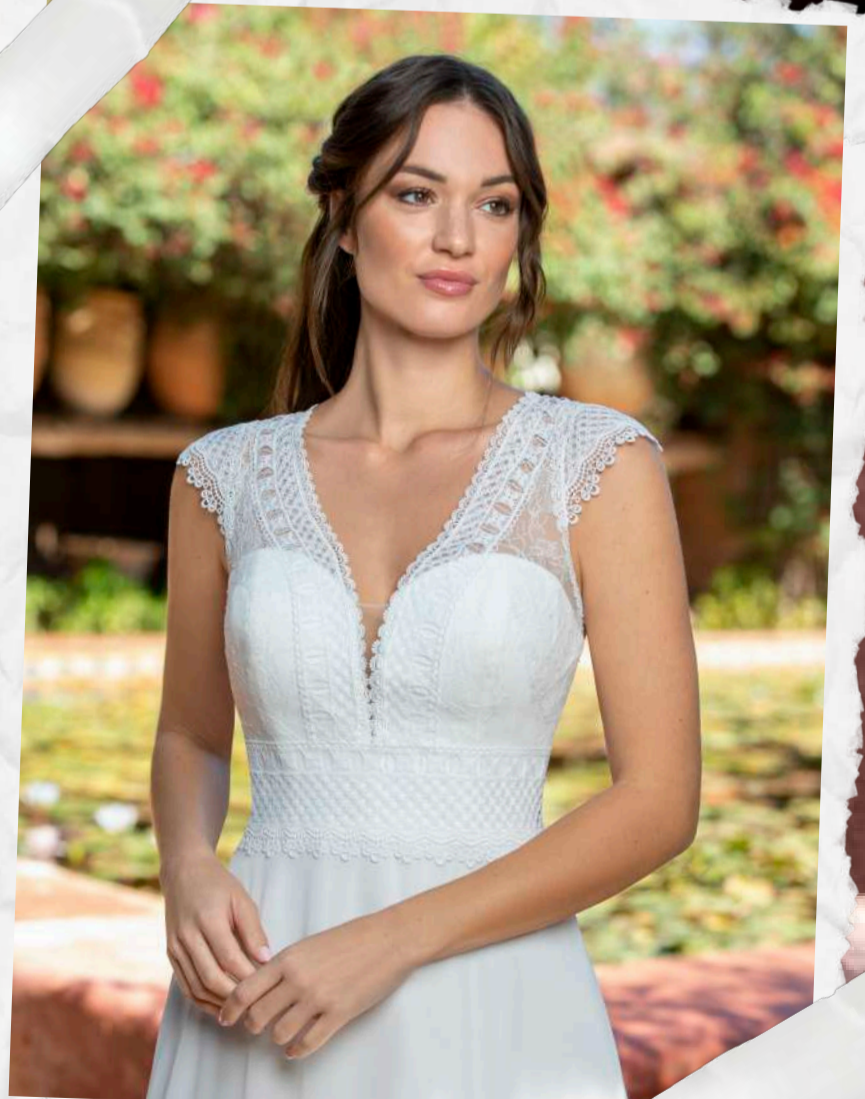
IVORY

Chiffon, Lace



BM 24-18





BM 24-19

IVORY

Chiffon, Lace

BM 24-19



out to
altho
al w
n Rat
e of ye
methir
ackth
y.
tch tic
night
ating,
or all i
-plac
big-c
ne ye
nich l
berwe
tensic
n par
er

BM 24-20
IVORY
Chiffon, Lace



ut to
altho
al w
Rat
of ye
methir
ackth
y.
tch tic
night
ating,
or all i
g-plac
f big-c
me ye
nich l
berwe
tensic
n par
mer
y w
ng c
ond
and
e



BM 24-20





BM 24-21

**IVORY
WHITE**

Chiffon, Lace



BM 24-21



BM 24-22

IVORY

Chiffon, Lace





BM 24-22

BM 24-23

**IVORY
WHITE**

Chiffon, Lace



BM 24-23



BM 24-24

IVORY/ JB NUDE

ALL IVORY

Chiffon, Lace





Marrakech



BM 24-25

IVORY
WHITE

Tulle, Lace



BM 24-26

**IVORY
WHITE**

Chiffon, Lace







BM 24-27

**IVORY/ IVORY
WHITE**

Chiffon, Lace





BM 23-28

IVORY/ IVORY
IVORY/JB NUDE - WHITE

Chiffon, Lace

BM 24-28





BM 23-29

IVORY

Chiffon, Lace

BM 24-29





BM 24-30

**IVORY/JB NUDE
IVORY**

Chiffon, Lace







BM 23-31

**IVORY
IVORY/NUDE**

Chiffon, Lace
Removable Sleeves







BM01TOP

IVORY
ALL WHITE
Lace



BM02TOP

IVORY
Lace



BM03TOP

IVORY
Lace



BM04TOP

IVORY

Crèpe



BM05TOP

IVORY

IVORY/NUDE

Lace



BM06TOP

IVORY

IVORY/NUDE - WHITE

Lace







BM01SK

IVORY
ALL WHITE
Chiffon



BM02SK

IVORY
ALL WHITE
Chiffon

BM03SK

**IVORY
WHITE**
Chiffon



BM04SK

**IVORY
WHITE**
Tulle



BM05SK

IVORY

WHITE

Chiffon



BM06SK

IVORY

Crèpe

BOM

Fróm Márrakéçh

GS